

CORRECTION

Open Access



Correction to: Targeted therapy against Bcl-2-related proteins in breast cancer cells

Manabu Emi¹, Ryungsa Kim^{2*}, Kazuaki Tanabe¹, Yoko Uchida¹ and Tetsuya Toge¹

Correction to: Breast Cancer Res
<https://doi.org/10.1186/bcr1323>

After the publication of this work [1] errors were noticed in Figs. 1a, 6a, and 8a—in which the β -actin bands were mistakenly presented. The corrected Figs. 1, 6, and 8 are presented below. The correction does not affect our conclusions. Nevertheless, we apologize for this error.

Author details

¹Department of Surgical Oncology, Research Institute for Radiation Biology and Medicine, Hiroshima University, Hiroshima, Japan. ²International Radiation Information Center, Research Institute for Radiation Biology and Medicine, Hiroshima University, Hiroshima, Japan.

Received: 22 January 2019 Accepted: 22 January 2019

Published online: 17 February 2019

Reference

1. Emi, et al. Targeted therapy against Bcl-2-related proteins in breast cancer cells. *Breast Cancer Res.* 2005;7:R940. <https://doi.org/10.1186/bcr1323>.

* Correspondence: rkim@hiroshima-u.ac.jp

²International Radiation Information Center, Research Institute for Radiation Biology and Medicine, Hiroshima University, Hiroshima, Japan
Full list of author information is available at the end of the article



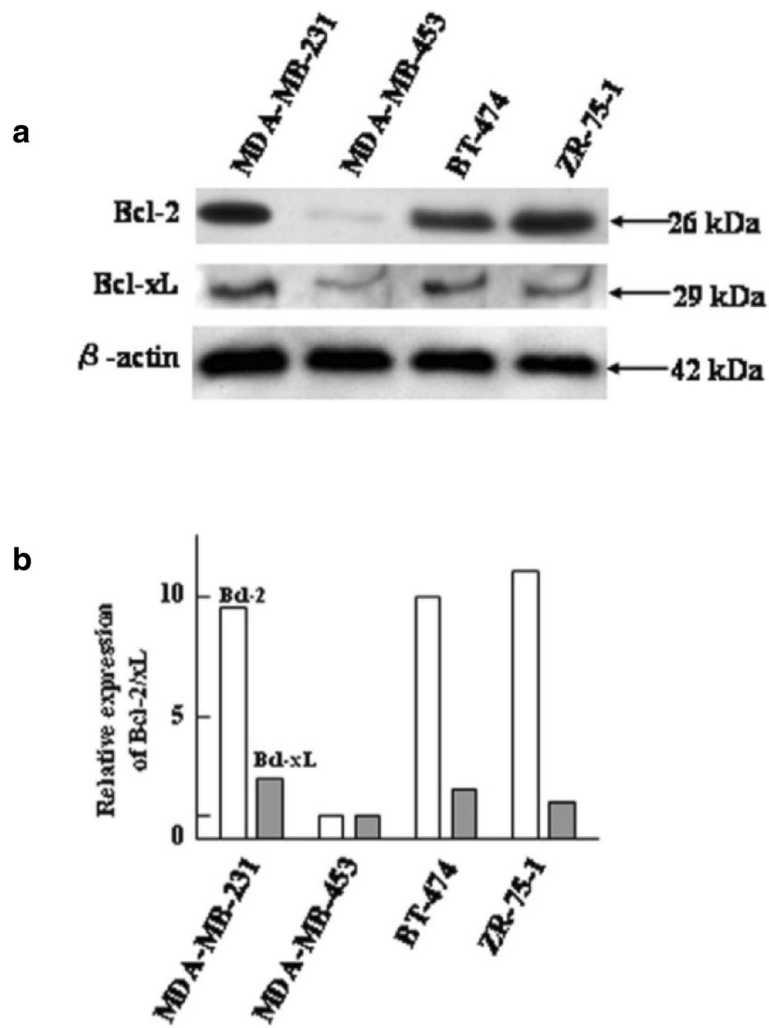


Fig. 1 Expression levels of Bcl-2 and Bcl-xL proteins in MDA-MB-231, MDA MD-453, BT-474, and ZR-75-1 cells. **a** Western blot analysis of Bcl-2 and Bcl-xL expression. **b** Quantification of Bcl-2 and Bcl-xL expression by densitometric analysis. The relative expression of Bcl-2 and BclxL in MDA-MB-453 cells was compared with the expression in MDAMB-231, BT-474, and ZR-75-1 cells. Results are from two representative, independent experiments

