

## Review

### Host microenvironment in breast cancer development

# Inflammatory and immune cells in tumour angiogenesis and arteriogenesis

Joanne L Yu and Janusz W Rak

Henderson Research Centre, McMaster University, Hamilton, Ontario, Canada

Corresponding author: Janusz W Rak (e-mail [jrak@thrombosis.hhscr.org](mailto:jrak@thrombosis.hhscr.org))

Received: 5 December 2002 Accepted: 8 January Published: 3 February 2003

*Breast Cancer Res* 2003, **5**:83-88 (DOI 10.1186/bcr573)

© 2003 BioMed Central Ltd (Print ISSN 1465-5411; Online ISSN 1465-542X)

## Abstract

Breast cancer progression is associated with and dependent upon robust neovascularization. It is becoming clear that tumour-associated 'normal' cells, such as immune/inflammatory cells, endothelial cells and stromal cells, conspire with cancer cells in promoting this process. In particular, infiltrating immune/inflammatory cells secrete a diverse repertoire of growth factors and proteases that enable them to enhance tumour growth by stimulating angiogenesis and, as we suggest here, by promoting 'tumour arteriogenesis' – enlargement of feeding vessels supplying the expanding tumour capillary bed. Macrophages and their chemoattractants (e.g. macrophage chemoattractant protein-1) are critical for the arteriogenic process in ischaemia, and probably also in breast neoplasia. A better understanding of these various cellular and molecular constituents of breast cancer neovascularization may be useful in designing more effective therapies.

**Keywords:** angiogenesis, arteriogenesis, cancer, immunity, inflammation

## Introduction

Infiltration of lymphocytes, macrophages, mast cells and neutrophils is a hallmark of inflammatory, defense and tissue repair reactions, which are often present in tumours [1,2]. Various types of tumour-infiltrating lymphocytes, including cytotoxic T cells, natural killer cells and lymphokine activated killer cells, are viewed as potential effectors of antitumour immunity and may oppose tumour expansion [3]. Tumour-associated macrophages (TAMs) constitute a major component of the leucocytic infiltrate [4], and activated macrophages have been shown to possess both direct and indirect tumouricidal activity [5,6]. However, evidence increasingly suggests that these cells may in fact symbiotically promote rather than inhibit tumour growth and development.

Macrophages, lymphocytes and mast cells have all been implicated in another host-dependent process, namely that of angiogenesis [7–9]. Clinical studies have linked the

extent of immune/inflammatory cell infiltration with increased blood vessel density and poor prognosis in various types of cancer, suggesting that these cells may contribute to tumour progression in large part by stimulating tumour neovascularization [10,11]. Several studies in mice support these observations, and demonstrate a critical role for macrophage and mast cell infiltration in promoting angiogenesis during the earliest stages of neoplastic progression [9,12,13].

## Molecular regulators of inflammatory cell infiltration into tumours

The infiltration of host immune cells into tumours is regulated by cues from the tumour microenvironment, in combination with tumour-derived chemokines, which together influence the adhesion, extravasation and migration of leucocytes. Breast carcinomas are known to contain a high proportion of infiltrating leucocytes, particularly TAMs. Macrophages are a heterogeneous population of cells that

belong to the mononuclear phagocyte system and are derived from blood-borne monocytes that migrate into tissues, where they undergo final differentiation. Tumour hypoxia is an important stimulus for extravasation of monocytes [14], which migrate into the tumour tissue along gradients of chemoattractants, and these TAMs become immobilized in ischaemic, necrotic areas of tumours, where they can remain for an extended time [15–18].

Many studies have linked increased TAM density to poor prognosis in breast cancer [15,19–21], and in fact certain genetic alterations that increase the malignancy of the tumour may concomitantly increase the degree of macrophage infiltration. A strong association has been reported between *HER-2*, *c-myc* and *int-2* oncogene amplification in breast tumour samples and the density of lymphocyte infiltration of the tumour [22]. In inflammatory breast cancer, expression of constitutively activated RhoC oncoprotein is associated with concomitant upregulation of both angiogenic (vascular endothelial growth factor [VEGF]) and inflammatory (IL-6) cytokines, leading to the formation of a specific type of inflammatory/angiogenic stroma in this particularly aggressive form of disease [23].

Some of the tumour molecular alterations that increase macrophage infiltration and macrophage-mediated angiogenesis include increased expression of monocyte chemoattractant protein (MCP)-1 and VEGF, both of which are highly expressed in breast tumour cells. MCP-1, a member of the C–C chemokine family, is involved in monocyte and T-lymphocyte migration, and is secreted by many human and murine tumour cells in addition to activated stromal cells [24,25]. MCP-1 expression in tumour cells is significantly correlated with the extent of TAM infiltration [26,27], and in particular both MCP-1 and VEGF expression have been positively correlated with TAM infiltration, angiogenesis and poor survival in breast cancer [28–30].

VEGF is a potent angiogenic growth factor that is over-expressed in the majority of human cancers [31]. VEGF produced by tumours promotes the proliferation, survival and migration of endothelial cells by binding to its receptors, namely VEGF receptor (VEGFR)-1 and VEGFR-2, which are expressed on the endothelial cell surface. However, in addition to these direct effects on endothelial cells, VEGF also stimulates monocyte migration through VEGFR-1 [32], which is expressed on monocytes and macrophages, as well as on endothelial cells [33,34]. A positive correlation between VEGF expression and degree of macrophage infiltration has been observed in invasive breast carcinoma [28,35] and other malignancies [36,37]. Placental growth factor and VEGF-C – two VEGF-related tumour-derived growth factors – can also stimulate monocyte chemotaxis [38,39]. Placental growth factor may also act as a survival factor for both endothelial cells and macrophages [40].

The other important factor responsible for increased macrophage infiltration in breast cancer is the macrophage colony-stimulating factor (CSF)-1; this is a haematopoietic growth factor that regulates the proliferation, survival and differentiation of monocytes and macrophages, which express the CSF-1 receptor [41]. Although it is secreted by many types of cells, increased expression of CSF-1 occurs in breast tumours, where it has been associated with high TAM infiltration and poor prognosis [42–44]. The critical importance of CSF-1 production, not only for macrophage recruitment but also for tumour vascularization and progression, has also been demonstrated in transgenic mouse models of breast cancer [45,46].

### **Contribution of inflammatory cells to tumour angiogenesis and lymphangiogenesis**

Although tumour cells themselves promote the recruitment and expansion of their own blood supply, tumour-associated immune/inflammatory cells can modify and contribute to this process by supplying a repertoire of growth factors, cytokines and proteases comparable to that secreted by tumour cells themselves (summarized in Table 1). Inflammatory cells can produce a myriad of cytokines and growth factors, many of which are proangiogenic, and directly stimulate the migration and proliferation of endothelial cells. For example, macrophages, mast cells and neutrophils all secrete VEGF, IL-8 and transforming growth factor- $\alpha$ . Some of these molecules, for example VEGF, act not only on endothelial cells but also stimulate migration of further inflammatory cells into the tumour, potentially forming self-perpetuating positive feedback loops. Factors that increase vascular permeability are also proangiogenic because they promote deposition of fibrin, providing a matrix favourable for endothelial cell and leucocyte migration. For example, macrophage-derived VEGF, substance P, platelet-activating factor and prostaglandins induce vessel hyperpermeability [47]. Histamine, which is stored and released by mast cells, has wide-ranging biological effects that include proangiogenic activity [48].

Inflammatory cells also secrete a variety of proteases that degrade and remodel the extracellular matrix [47]. For example, macrophages, mast cells, neutrophils and lymphocytes all secrete matrix metalloprotease (MMP)-9 – a MMP that has emerged as an important modulator of angiogenesis and tumour development [49]. Some of these proteases (e.g. urokinase-type plasminogen activator and heparanase) release proangiogenic growth factors (e.g. basic fibroblast growth factor) that are sequestered by heparan sulphate proteoglycans in the extracellular matrix. However, it should be kept in mind that MMPs, including MMP-9, may also have an antiangiogenic effect (at later stages) by processing the  $\alpha 3$  chain of type IV collagen to the angiogenesis inhibitor tumstatin [50]. Furthermore, at least one macrophage-derived protease, namely

MMP-12 (metalloelastase), has been shown to generate angiostatin, an endogenous angiogenesis inhibitor, from its precursor – plasminogen [51]. MMP-7 and MMP-9 have also been shown to have angiostatin-converting activity [52].

It should be noted that not all of the growth factors and cytokines released by inflammatory cells are proangiogenic. For example, macrophages secrete thrombospondin-1, interferon- $\alpha$  and interferon- $\gamma$ , which are antiangiogenic. Many cytokines (e.g. transforming growth factor- $\beta$ , IL-1 $\beta$ , IL-6, tumour necrosis factor- $\alpha$ ) are known to have pleiotropic effects, stimulating angiogenesis under certain conditions and inhibiting it under others [47]. It is not known how the net proportion of the various proangiogenic or antiangiogenic activities of macrophages and other inflammatory cells is regulated. However, this balance between angiogenesis promoting, inhibiting and modulating influences at given times and locations in the tumour microenvironment clearly has a potential to determine the overall course and dynamics of blood vessel formation.

Finally, immune/inflammatory cells may also promote tumour lymphangiogenesis by secreting the lymphangiogenic growth factors VEGF-C and VEGF-D [53,54]. The formation of peritumoural lymphatic vessels, which in one study correlated with the extent of TAM recruitment, represents an important conduit for the metastasis of tumours to regional lymph nodes, with major implications for patient prognosis [54,55].

### 'Tumour arteriogenesis': the possible role of inflammatory cells

Although various processes that affect tumour microcirculation (both blood and lymphatic) have attracted considerable attention and are being extensively characterized at the molecular level, there has been essentially no emphasis on the events that must implicitly occur in the vascular tree upstream of the site of active angiogenesis. The recruitment of large numbers of capillary microvessels during tumour growth (as a result of angiogenesis) considerably increases the intratumoural capillary volume – a circumstance that would be expected to require the concurrent expansion of upstream arterioles and downstream venules (i.e. tumour 'feeding vessels'). Indeed, such dilatations of feeding vessels have been observed using angiography in cancer patients [56]. This peritumoural remodelling and expansion of pre-existing arteries and arterioles probably involves processes similar to collateral vessel formation or 'arteriogenesis', which occurs during ischaemic limb or heart disease. We postulate that an analogous process of 'tumour arteriogenesis' must accompany angiogenic expansion of the microvasculature, and hence such a process could similarly be viewed as a rate-limiting and targetable event during tumour expansion.

**Table 1**

#### Angiogenesis modulators produced by inflammatory/immune cells

Cell type	Activity	Molecule	Reference	
Macrophages	Proangiogenic	VEGF	[62]	
		TGF- $\alpha$	[63,64]	
		IL-8	[65]	
		bFGF	[66]	
		TP	[30,67]	
		PDGF	[68]	
		Substance P	[69]	
		Prostaglandins	[70]	
		Antiangiogenic	TSP-1	[71]
			IFN- $\alpha$	[72]
	IFN- $\gamma$		[73]	
	Protease	t-PA	[74]	
		u-PA	[75,76]	
MMP-1, -2, -3, -7, -9 and -12		[10,12,51]		
Mast cells	Proangiogenic	VEGF	[77,78]	
		bFGF	[79]	
		TGF- $\beta$	[80]	
		TNF- $\alpha$	[81]	
		IL-8	[81]	
		Histamine	[48]	
	Protease	Chymase	[9,81,82]	
		Tryptase	[9,81]	
		MMP-9	[12]	
		Heparanase	[83]	
Neutrophils	Proangiogenic	VEGF	[84]	
		IL-8	[84]	
	Antiangiogenic	IL-12	[84]	
		IP-10	[85]	
		MIG	[85]	
	Protease	MMP-9	[86]	
		u-PA	[86]	
		Elastase	[12,87]	

bFGF, basic fibroblast growth factor; IFN, interferon; IP, interferon gamma inducible protein; MMP, matrix metalloprotease; PDGF, platelet-derived growth factor; TGF, transforming growth factor; TNF, tumour necrosis factor; TP, thymidine phosphorylase; t-PA, tissue-type plasminogen activator; u-PA, urokinase-type plasminogen activator; VEGF, vascular endothelial growth factor.

Monocytes are critical for the initiation of arteriogenesis because they adhere to and invade endothelium activated by the increased shear stress that results from large pressure differences between perfused areas [57]. The involvement of monocytes in arteriogenesis was discovered by Schaper *et al.* in 1976 [58], shortly before their role in angiogenesis in 1977 [7]. MCP-1 is once again implicated in this process because it not only attracts monocytes but also promotes their adhesion by inducing

them to upregulate Mac-1, the receptor for intercellular adhesion molecule-1 (ICAM-1) that is expressed in activated endothelium [59]. Monocytes that adhere and then invade the arteriolar wall subsequently promote collateral artery growth by producing cytokines such as tumour necrosis factor- $\alpha$  and basic fibroblast growth factor [60]. Studies of collateral growth in rabbits have shown that, although prevention of monocyte adhesion (e.g. using antibodies to ICAM-1) delays arteriogenesis, infusion of MCP-1 or survival factors for monocytes (e.g. granulocyte-macrophage CSF) accelerate the process [57]. Although VEGF has also been shown to stimulate collateral growth, it now appears as though this positive effect of VEGF on arteriogenesis may be due principally to its effect on activating monocytes, stimulating their adhesion to the endothelium and their transmigration through it [61].

Although the large 'feeding vessels' that supply tumour vascular beds represent a potentially useful target for anti-cancer therapies, the exact mechanisms by which they are formed and recruited remains unknown. Again, the participation of monocytes/macrophages in this process has never been examined; however, given their importance in collateral formation, it is clear that they have the capability to play a considerable role. These issues are being actively pursued in our laboratory.

## Conclusion

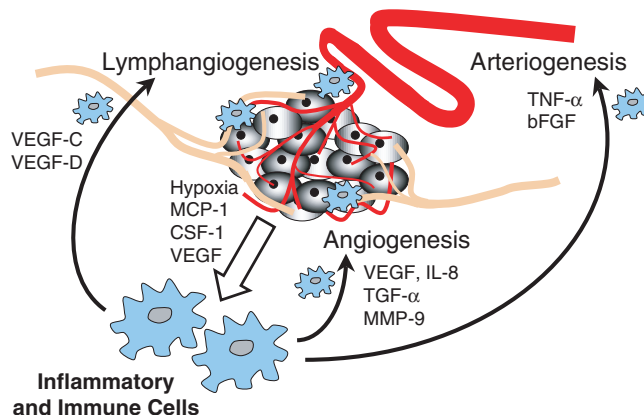
The recruitment of monocytes, macrophages and other inflammatory cells to a tumour appears to be a common denominator for the major processes involved in tumour development and progression (Fig. 1). Inflammatory cells contribute to tumour angiogenesis by supplying proangiogenic growth factors, cytokines and proteases. They also contribute factors that promote the formation and enlargement of intratumoural or peritumoural lymphatic vessels, eventually allowing a tumour to metastasize to distant organs. Finally, they may also play a critical role in arteriogenesis by promoting the growth of the larger vessels that supply the expanding capillary bed, feeding the rapidly growing tumour mass.

Is the recruitment of inflammatory cells a good target for cancer therapy? It is important to keep in mind that macrophages and other inflammatory cells, despite their proangiogenic and protumour effects, may also participate in antitumour immunosurveillance. The answer to this

This article is the second in a review series on *Host microenvironment in breast cancer development*, edited by Gloria Heppner.

Other articles in the series can be found at <http://breast-cancer-research.com/articles/series.asp?qrs=heppner>

**Figure 1**



Inflammatory cells are recruited by tumours and play a supporting role during tumour progression, promoting tumour expansion by stimulating angiogenesis and arteriogenesis, and tumour metastasis through lymphangiogenesis. bFGF, basic fibroblast growth factor; CSF, colony-stimulating factor; MCP, macrophage chemoattractant protein; MMP, matrix metalloprotease; TGF, transforming growth factor; TNF, tumour necrosis factor; VEGF, vascular endothelial growth factor.

question will probably depend on the type of tumour, on the stage at which inflammatory cells provide the greatest contribution during tumour progression, and on the nature of their influence (tumour-promoting or inhibitory). However, it could be speculated that simultaneously targeting the proarteriogenic effects of macrophages and the proangiogenic functions of endothelial cells may lead to synergistic antitumour effects, and exploration of this possibility is therefore warranted.

## Competing interests

None declared.

## Acknowledgements

We thank Dr Jeff Weitz and other colleagues at HRC for their encouragement during preparation of this manuscript. This work was supported by the Terry Fox Grant from the National Cancer Institute of Canada to JR. JR is the recipient of a Research Scientist Award from NCIC.

## References

1. Dvorak HF: **Tumors: wounds that do not heal.** *N Engl J Med* 1986, **315**:1650-1659.
2. Ravenswaay Claasen HH, Kluin PM, Fleuren GJ: **Tumor infiltrating cells in human cancer. On the possible role of CD16<sup>+</sup> macrophages in antitumor cytotoxicity.** *Lab Invest* 1992, **67**:166-174.
3. Rosenberg SA: **Progress in human tumour immunology and immunotherapy.** *Nature* 2001, **411**:380-384.
4. Carr I: *The Macrophage and Cancer.* Edinburgh: Eiconoprint; 1977.
5. Urban JL, Shepard HM, Rothstein JL, Sugarman BJ, Schreiber H: **Tumor necrosis factor: a potent effector molecule for tumor cell killing by activated macrophages.** *Proc Natl Acad Sci USA* 1986, **83**:5233-5237.
6. Pozzi LA, Weiser WY: **Human recombinant migration inhibitory factor activates human macrophages to kill tumor cells.** *Cell Immunol* 1992, **145**:372-379.
7. Polverini PJ, Cotran RS, Gimbrone MA, Unanue ER: **Activated macrophages induce vascular proliferation.** *Nature* 1977, **269**:804-806.



8. Sidky YA, Auerbach R: **Lymphocyte-induced angiogenesis: a quantitative and sensitive assay of the graft-vs-host reaction.** *J Exp Med* 1975, **141**:1084-1100.
9. Coussens LM, Raymond WW, Bergers G, Laig-Webster M, Behrendtsen O, Werb Z, Caughey GH, Hanahan D: **Inflammatory mast cells up-regulate angiogenesis during squamous epithelial carcinogenesis.** *Genes Dev* 1999, **13**:1382-1397.
10. Bingle L, Brown NJ, Lewis CE: **The role of tumour-associated macrophages in tumour progression: implications for new anticancer therapies.** *J Pathol* 2002, **196**:254-265.
11. Crowther M, Brown NJ, Bishop ET, Lewis CE: **Microenvironmental influence on macrophage regulation of angiogenesis in wounds and malignant tumors.** *J Leukoc Biol* 2001, **70**:478-490.
12. Coussens LM, Tinkle CL, Hanahan D, Werb Z: **MMP-9 supplied by bone marrow-derived cells contributes to skin carcinogenesis.** *Cell* 2000, **103**:481-490.
13. Huang S, Van Arsdall M, Tedjarati S, McCarty M, Wu W, Langley R, Fidler IJ: **Contributions of stromal metalloproteinase-9 to angiogenesis and growth of human ovarian carcinoma in mice.** *J Natl Cancer Inst* 2002, **94**:1134-1142.
14. Kalra VK, Shen Y, Sultana C, Rattan V: **Hypoxia induces PECAM-1 phosphorylation and transendothelial migration of monocytes.** *Am J Physiol* 1996, **271**:H2025-H2034.
15. Leek RD, Lewis CE, Whitehouse R, Greenall M, Clarke J, Harris AL: **Association of macrophage infiltration with angiogenesis and prognosis in invasive breast carcinoma.** *Cancer Res* 1996, **56**:4625-4629.
16. Turner L, Scotton C, Negus R, Balkwill F: **Hypoxia inhibits macrophage migration.** *Eur J Immunol* 1999, **29**:2280-2287.
17. Leek RD, Landers RJ, Harris AL, Lewis CE: **Necrosis correlates with high vascular density and focal macrophage infiltration in invasive carcinoma of the breast.** *Br J Cancer* 1999, **79**:991-995.
18. Lewis JS, Landers RJ, Underwood JC, Harris AL, Lewis CE: **Expression of vascular endothelial growth factor by macrophages is up-regulated in poorly vascularized areas of breast carcinomas.** *J Pathol* 2000, **192**:150-158.
19. Lee AH, Happerfield LC, Bobrow LG, Millis RR: **Angiogenesis and inflammation in invasive carcinoma of the breast.** *J Clin Pathol* 1997, **50**:669-673.
20. Volodko N, Reiner A, Rudas M, Jakesh R: **Tumour-associated macrophages in breast cancer and their prognostic correlations.** *Breast* 1998, **7**:99-105.
21. Goede V, Brogelli L, Ziche M, Augustin HG: **Induction of inflammatory angiogenesis by monocyte chemoattractant protein-1.** *Int J Cancer* 1999, **82**:765-770.
22. Tang RP, Kacinski B, Validire P, Beuvon F, Sastre X, Benoit P, dela Rochefordiere A, Mosseri V, Pouillart P, Scholl S: **Oncogene amplification correlates with dense lymphocyte infiltration in human breast cancers: a role for hematopoietic growth factor release by tumor cells?** *J Cell Biochemistry* 1990, **44**:189-198.
23. van Golen KL, Wu ZF, Qiao XT, Bao L, Merajver SD: **RhoC GTPase overexpression modulates induction of angiogenic factors in breast cells.** *Neoplasia* 2000, **2**:418-425.
24. Graves DT, Jiang YL, Williamson MJ, Valente AJ: **Identification of monocyte chemotactic activity produced by malignant cells.** *Science* 1989, **245**:1490-1493.
25. Yoshimura T, Robinson EA, Tanaka S, Appella E, Kuratsu J, Leonard EJ: **Purification and amino acid analysis of two human glioma-derived monocyte chemoattractants.** *J Exp Med* 1989, **169**:1449-1459.
26. Negus RP, Stamp GW, Relf MG, Burke F, Malik ST, Bernasconi S *et al.*: **The detection and localization of monocyte chemoattractant protein-1 (MCP-1) in human ovarian cancer.** *J Clin Invest* 1995, **95**:2391-2396.
27. Sato K, Kuratsu J, Takeshima H, Yoshimura T, Ushio Y: **Expression of monocyte chemoattractant protein-1 in meningioma.** *J Neurosurg* 1995, **82**:874-878.
28. Valkovic T, Dobrila F, Melato M, Sasso F, Rizzardi C, Jonjic N: **Correlation between vascular endothelial growth factor, angiogenesis, and tumor-associated macrophages in invasive ductal breast carcinoma.** *Virchows Arch* 2002, **440**:583-588.
29. Saji H, Koike M, Yamori T, Saji S, Seiki M, Matsushima K, Toi M: **Significant correlation of monocyte chemoattractant protein-1 expression with neovascularization and progression of breast carcinoma.** *Cancer* 2001, **92**:1085-1091.
30. Ueno T, Toi M, Saji H, Muta M, Bando H, Kuroi K, Koike M, Inadera H, Matsushima K: **Significance of macrophage chemoattractant protein-1 in macrophage recruitment, angiogenesis, and survival in human breast cancer.** *Clin Cancer Res* 2000, **6**:3282-3289.
31. Ferrara N, Davis-Smyth T: **The biology of vascular endothelial growth factor.** *Endocr Rev* 1997, **18**:4-25.
32. Clauss M, Gerlach M, Gerlach H, Brett J, Wang F, Familletti PC, Pan YC, Olander JV, Connolly DT, Stern D: **Vascular permeability factor: a tumor-derived polypeptide that induces endothelial cell and monocyte procoagulant activity, and promotes monocyte migration.** *J Exp Med* 1990, **172**:1535-1545.
33. Barleon B, Sozzani S, Zhou D, Weich HA, Mantovani A, Marme D: **Migration of human monocytes in response to vascular endothelial growth factor (VEGF) is mediated via the VEGF receptor flt-1.** *Blood* 1996, **87**:3336-3343.
34. Sawano A, Iwai S, Sakurai Y, Ito M, Shitara K, Nakahata T, Shibuya M: **Flt-1, vascular endothelial growth factor receptor 1, is a novel cell surface marker for the lineage of myelomonocytic macrophages in humans.** *Blood* 2001, **97**:785-791.
35. Leek RD, Hunt NC, Landers RJ, Lewis CE, Royds JA, Harris AL: **Macrophage infiltration is associated with VEGF and EGFR expression in breast cancer.** *J Pathol* 2000, **190**:430-436.
36. Duyndam MC, Hilhorst MC, Schluper HM, Verheul HM, van Diest PJ, Kraal G, Pinedo HM, Boven E: **Vascular endothelial growth factor-165 overexpression stimulates angiogenesis and induces cyst formation and macrophage infiltration in human ovarian cancer xenografts.** *Am J Pathol* 2002, **160**:537-548.
37. Yeo KT, Wang HH, Nagy JA, Sioussat TM, Ledbetter SR, Hoogewerf AJ, Zhou Y, Masse EM, Senger DR, Dvorak HF, *et al.*: **Vascular permeability factor (vascular endothelial growth factor) in guinea pig and human tumor and inflammatory effusions.** *Cancer Res* 1993, **53**:2912-2918.
38. Clauss M, Weich H, Breier G, Knies U, Rockl W, Waltenberger J, Risau W: **The vascular endothelial growth factor receptor Flt-1 mediates biological activities. Implications for a functional role of placenta growth factor in monocyte activation and chemotaxis.** *J Biol Chem* 1996, **271**:17629-17634.
39. Skobe M, Hamberg LM, Hawighorst T, Schirner M, Wolf GL, Alitalo K, Detmar M: **Concurrent induction of lymphangiogenesis, angiogenesis, and macrophage recruitment by vascular endothelial growth factor-C in melanoma.** *Am J Pathol* 2001, **159**:893-903.
40. Adini A, Kornaga T, Firoozbakht F, Benjamin LE: **Placental growth factor is a survival factor for tumor endothelial cells and macrophages.** *Cancer Res* 2002, **62**:2749-2752.
41. Stanley ER, Guilbert LJ, Tushinski RJ, Bartelmez SH: **CSF-1: a mononuclear phagocyte lineage-specific hemopoietic growth factor.** *J Cell Biochem* 1983, **21**:151-159.
42. Ramakrishnan S, Xu FJ, Brandt SJ, Niedel JE, Bast RC Jr, Brown EL: **Constitutive production of macrophage colony-stimulating factor by human ovarian and breast cancer cell lines.** *J Clin Invest* 1989, **83**:921-926.
43. Tang R, Beuvon F, Ojeda M, Mosseri V, Pouillart P, Scholl S: **M-CSF (monocyte colony stimulating factor) and M-CSF receptor expression by breast tumour cells: M-CSF mediated recruitment of tumour infiltrating monocytes?** *J Cell Biochem* 1992, **50**:350-356.
44. Kacinski BM: **CSF-1 and its receptor in ovarian, endometrial and breast cancer.** *Ann Med* 1995, **27**:79-85.
45. Nowicki A, Szenajch J, Ostrowska G, Wojtowicz A, Wojtowicz K, Kruszewski AA, Maruszynski M, Aukerman SL, Wiktor-Jedrzejczak W: **Impaired tumor growth in colony-stimulating factor 1 (CSF-1)-deficient, macrophage-deficient op/op mouse: evidence for a role of CSF-1-dependent macrophages in formation of tumor stroma.** *Int J Cancer* 1996, **65**:112-119.
46. Lin EY, Nguyen AV, Russell RG, Pollard JW: **Colony-stimulating factor 1 promotes progression of mammary tumors to malignancy.** *J Exp Med* 2001, **193**:727-740.
47. Sunderkotter C, Steinbrink K, Goebeler M, Bhardwaj R, Sorg C: **Macrophages and angiogenesis.** *J Leukoc Biol* 1994, **55**:410-422.
48. Sorbo J, Jakobsson A, Norrby K: **Mast-cell histamine is angiogenic through receptors for histamine1 and histamine2.** *Int J Exp Pathol* 1994, **75**:43-50.
49. Pepper MS: **Role of the matrix metalloproteinase and plasminogen activator-plasmin systems in angiogenesis.** *Arterioscler Thromb Vasc Biol* 2001, **21**:1104-1117.

50. Maeshima Y, Sudhakar A, Lively JC, Ueki K, Kharbanda S, Kahn CR, Sonenberg N, Hynes RO, Kalluri R: **Tumstatin, an endothelial cell-specific inhibitor of protein synthesis.** *Science* 2002, **295**:140-143.
51. Dong Z, Kumar R, Yang X, Fidler IJ: **Macrophage-derived metalloelastase is responsible for the generation of angiostatin in Lewis lung carcinoma.** *Cell* 1997, **88**:801-810.
52. Patterson BC, Sang QA: **Angiostatin-converting enzyme activities of human matrilysin (MMP-7) and gelatinase B/type IV collagenase (MMP-9).** *J Biol Chem* 1997, **272**:28823-28825.
53. Jussila L, Alitalo K: **Vascular growth factors and lymphangiogenesis.** *Physiol Rev* 2002, **82**:673-700.
54. Schoppmann SF, Birner P, Stockl J, Kalt R, Ullrich R, Caucig C, Kriehuber E, Nagy K, Alitalo K, Kerjaschki D: **Tumor-associated macrophages express lymphatic endothelial growth factors and are related to peritumoral lymphangiogenesis.** *Am J Pathol* 2002, **161**:947-956.
55. Padera TP, Kadambi A, di Tomaso E, Carreira CM, Brown EB, Boucher Y, Choi NC, Mathisen D, Wain J, Mark EJ, Munn LL, Jain RK: **Lymphatic metastasis in the absence of functional intratumor lymphatics.** *Science* 2002, **296**:1883-1886.
56. Folkman J: **Tumor angiogenesis.** In *Cancer Medicine*. Edited by Holland JF, Bast RC, Morton DL, Frei E, Kufe DW, Weichselbaum RR. Baltimore: Williams & Wilkins; 1997:181-204.
57. Scholz D, Cai WJ, Schaper W: **Arteriogenesis, a new concept of vascular adaptation in occlusive disease.** *Angiogenesis* 2001, **4**:247-257.
58. Schaper J, Konig R, Franz D, Schaper W: **The endothelial surface of growing coronary collateral arteries. Intimal margination and diapedesis of monocytes. A combined SEM and TEM study.** *Virchows Arch A Pathol Anat Histol* 1976, **370**:193-205.
59. Scholz D, Ito W, Fleming I, Deindl E, Sauer A, Wiesnet M, Busse R, Schaper J, Schaper W: **Ultrastructure and molecular histology of rabbit hind-limb collateral artery growth (arteriogenesis).** *Virchows Arch* 2000, **436**:257-270.
60. Arras M, Ito WD, Scholz D, Winkler B, Schaper J, Schaper W: **Monocyte activation in angiogenesis and collateral growth in the rabbit hindlimb.** *J Clin Invest* 1998, **101**:40-50.
61. Heil M, Clauss M, Suzuki K, Buschmann IR, Willuweit A, Fischer S, Schaper W: **Vascular endothelial growth factor (VEGF) stimulates monocyte migration through endothelial monolayers via increased integrin expression.** *Eur J Cell Biol* 2000, **79**:850-857.
62. Xiong M, Elson G, Legarda D, Leibovich SJ: **Production of vascular endothelial growth factor by murine macrophages: regulation by hypoxia, lactate, and the inducible nitric oxide synthase pathway.** *Am J Pathol* 1998, **153**:587-598.
63. Madtes DK, Raines EW, Sakariassen KS, Assoian RK, Sporn MB, Bell GI, Ross R: **Induction of transforming growth factor- $\alpha$  in activated human alveolar macrophages.** *Cell* 1988, **53**:285-293.
64. Rappolee DA, Mark D, Banda MJ, Werb Z: **Wound macrophages express TGF- $\alpha$  and other growth factors in vivo: analysis by mRNA phenotyping.** *Science* 1988, **241**:708-712.
65. Koch AE, Polverini PJ, Kunkel SL, Harlow LA, DiPietro LA, Elner VM, Elner SG, Strieter RM: **Interleukin-8 as a macrophage-derived mediator of angiogenesis.** *Science* 1992, **258**:1798-1801.
66. Leek RD, Harris AL, Lewis CE: **Cytokine networks in solid human tumors: regulation of angiogenesis.** *J Leukoc Biol* 1994, **56**:423-435.
67. Nagaoka H, Iino Y, Takei H, Morishita Y: **Platelet-derived endothelial cell growth factor/thymidine phosphorylase expression in macrophages correlates with tumor angiogenesis and prognosis in invasive breast cancer.** *Int J Oncol* 1998, **13**:449-454.
68. Martinet Y, Bitterman PB, Mornex JF, Grotendorst GR, Martin GR, Crystal RG: **Activated human monocytes express the c-sis proto-oncogene and release a mediator showing PDGF-like activity.** *Nature* 1986, **319**:158-160.
69. Ziche M, Morbidelli L, Geppetti P, Maggi CA, Dolara P: **Substance P induces migration of capillary endothelial cells: a novel NK-1 selective receptor mediated activity.** *Life Sci* 1991, **48**:L7-L11.
70. Humes JL, Bonney RJ, Pelus L, Dahlgren ME, Sadowski SJ, Kuehl FA Jr, Davies P: **Macrophages synthesize and release prostaglandins in response to inflammatory stimuli.** *Nature* 1977, **269**:149-151.
71. Jaffe EA, Ruggiero JT, Falcone DJ: **Monocytes and macrophages synthesize and secrete thrombospondin.** *Blood* 1985, **65**:79-84.
72. Fleit HB, Rabinovitch M: **Production of interferon by in vitro derived bone marrow macrophages.** *Cell Immunol* 1981, **57**:495-504.
73. Robinson BW, McLemore TL, Crystal RG: **Gamma interferon is spontaneously released by alveolar macrophages and lung T lymphocytes in patients with pulmonary sarcoidosis.** *J Clin Invest* 1985, **75**:1488-1495.
74. Klimetzek V, Sorg C: **Lymphokine-induced secretion of plasminogen activator by murine macrophages.** *Eur J Immunol* 1977, **7**:185-187.
75. Xu Y, Hagege J, Doublet JD, Callard P, Sraer JD, Ronne E, Rondeau E: **Endothelial and macrophage upregulation of urokinase receptor expression in human renal cell carcinoma.** *Hum Pathol* 1997, **28**:206-213.
76. Hildenbrand R, Dilger I, Horlin A, Stutte HJ: **Urokinase and macrophages in tumour angiogenesis.** *Br J Cancer* 1995, **72**:818-823.
77. Boesiger J, Tsai M, Maurer M, Yamaguchi M, Brown LF, Claffey KP, Dvorak HF, Dalli SJ: **Mast cells can secrete vascular permeability factor/vascular endothelial cell growth factor and exhibit enhanced release after immunoglobulin E-dependent upregulation of fc epsilon receptor I expression.** *J Exp Med* 1998, **188**:1135-1145.
78. Grutzkau A, Kruger-Krasagakes S, Baumeister H, Schwarz C, Kogel H, Welker P, Lippert U, Henz BM, Moller A: **Synthesis, storage, and release of vascular endothelial growth factor/vascular permeability factor (VEGF/VPF) by human mast cells: implications for the biological significance of VEGF206.** *Mol Biol Cell* 1998, **9**:875-884.
79. Reed JA, Albino AP, McNutt NS: **Human cutaneous mast cells express basic fibroblast growth factor.** *Lab Invest* 1995, **72**:215-222.
80. Pennington DW, Lopez AR, Thomas PS, Peck C, Gold WM: **Dog mastocytoma cells produce transforming growth factor beta 1.** *J Clin Invest* 1992, **90**:35-41.
81. Metcalfe DD, Baram D, Mekori YA: **Mast cells.** *Physiol Rev* 1997, **77**:1033-1079.
82. Norrby K: **Mast cells and angiogenesis.** *Acta Path Microbiol Scand* 2002, **110**:355-371.
83. Bashkin P, Razin E, Eldor A, Vlodavsky I: **Degranulating mast cells secrete an endoglycosidase that degrades heparan sulfate in subendothelial extracellular matrix.** *Blood* 1990, **75**:2204-2212.
84. Cassatella MA: **Neutrophil-derived proteins: selling cytokines by the pound.** *Adv Immunol* 1999, **73**:369-509.
85. Gasperini S, Marchi M, Calzetti F, Laudanna C, Vicentini L, Olsen H, Murphy M, Liao F, Farber J, Cassatella MA: **Gene expression and production of the monokine induced by IFN- $\gamma$  (MIG), IFN- $\gamma$ -inducible T cell alpha chemoattractant (I-TAC), and IFN- $\gamma$ -inducible protein-10 (IP-10) chemokines by human neutrophils.** *J Immunol* 1999, **162**:4928-4937.
86. Borregaard N, Cowland JB: **Granules of the human neutrophilic polymorphonuclear leukocyte.** *Blood* 1997, **89**:3503-3521.
87. Scapini P, Nesi L, Morini M, Tanghetti E, Belleri M, Noonan D, Presta M, Albini A, Cassatella MA: **Generation of biologically active angiostatin kringle 1-3 by activated human neutrophils.** *J Immunol* 2002, **168**:5798-5804.

## Correspondence

Janusz W Rak, Henderson Research Centre, McMaster University, 711 Concession St., Hamilton, Ontario, Canada L8V 1C3. Tel: +1 905 527 2299 ext. 43771; fax: +1 905 575 2646; e-mail: jrak@thrombosis.hhsc.org